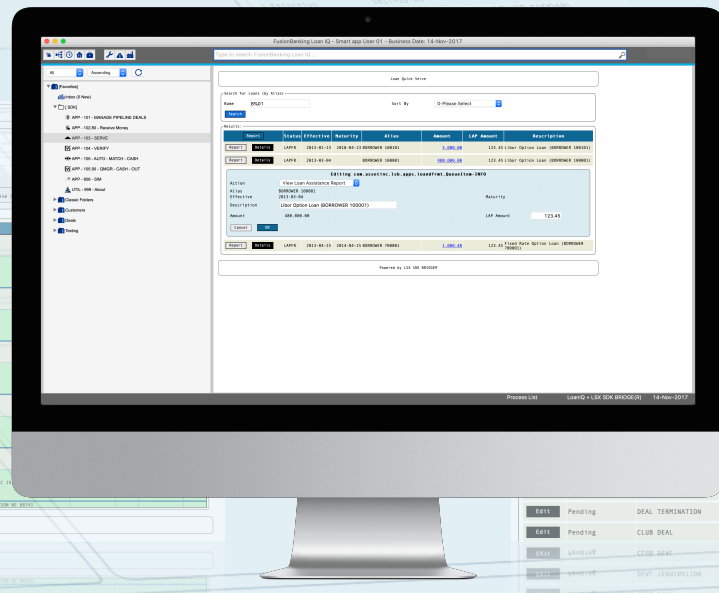


# From Setup to Integration, there's a (Smart Productivity) App for that.

Setup, Book, Verify, Service, or Integrate, be productive with Smart Productivity Apps powered by ASSET Inc.'s LSX SDK Bridge. Streamlined, focussed, and extensible\*\*, available on Loan IQ\* Desktop.



## Pipeline

Todo. Organized, Focussed, and streamlined

Configurable\*\*, extensible, definable, and organized pipeline of deals and other pipeline objects requiring quick review, enrichment, and reporting. Manage inbound pipeline.



## Book

Data Entry. Quick, Concise, Effective.

Unified Quick data entry\*\*\* and enrichment right on the Loan IQ Desktop. Once entered, the data may be used to fire off relevant Loan IQ Web Service Calls to create business information.



## Verify

Review & Approve with informed confidence

Quickly review and verify—approve, if you will—from the list of transactions requiring due diligence. Configurable 360° view of transaction information lets you verify with confidence.



## Service

Manage exceptions and serve loans

A Swiss army knife\*\* of frequent loan tasks performed based on schedule, exception, or demand. The goto place for handling common loan actions fulfilled by Loan IQ Web Service calls.



## Integrate

Match, Reconcile, and Release Cash and more

Alleviate labor intensive cash receipt and receivable matching, in quick, easy, and reliable manner. Using the Recommendation Engine reduce risks of mismatch and cash breaks and exposures.

Deploy, Explore, Configure, and Adapt these as well as build many more new apps for your Loan IQ powered lending platform.

\* LSX SDK BRIDGE © of ASSET Inc., Loan IQ © of FINASTRA / \*\* Extensibility and Configurability achieved through LSX SDK BRIDGE Usage \*\*\* Apps may need to be extended and configured to fit bespoke requirements. \*\*\*\* Contact [QN24X7@ASSETINC.COM](mailto:QN24X7@ASSETINC.COM) or visit [www.assetinc.com](http://www.assetinc.com) for more details.  
© 2014-2026 ASSET, Inc. Confidential and proprietary. 2026-05-15 v26Q2